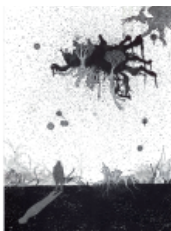




Omen
Printed and recycled ink on
heavyweight matte paper
46.5 x 71 cm £550



Roots
Printed and recycled ink on
heavyweight matte paper
19.5 x 33.5 cm £195



Genesis
Printed and recycled ink on
heavyweight matte paper
47 x 63.5 cm £500



Forms
Printed and recycled ink on
heavyweight matte paper
61 x 66 cm £590



Chain
Printed and recycled ink on
heavyweight matte paper
71 x 46.5 cm £550



Construction
Printed and recycled ink on
heavyweight matte paper
70.5 x 30.5 cm £500

UNCANNY VIEWS

Antlers visits the landscape genre for its second pop-up exhibition, Uncanny Views.

Uncanny Views is a group show that presents sometimes romantic, often unsettling views of land, sea and city. The artists, each with a base in drawing, explore familiar yet foreign scenes with suggestions of the looming, lurking and unknown. Quintessential landscapes, urban hinterlands and unspecified seas are among the views depicted by the four Bristol based artists.

ANTLERS

Antlers is a gallery nomadic by design. Recently launched in Bristol, we produce temporary exhibitions moving through different spaces across the city. Antlers' website acts as our only permanent residence and hosts our online shop.

www.antlersgallery.com
facebook.com/antlersgallery

ANOUK MERCIER

HELEN JONES

MAX NAYLOR

RUPERT MORLEY

Uncanny Views

2 - 4 Park Street, Bristol, BS1 5HS
10 - 26 February 2011 11 - 7 daily

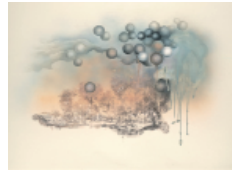
ANOUK MERCIER



Untitled (no. 16)
Fine liner, colour pencil, graphite,
acetone transfer and watercolour
on paper
77.5 x 59.7 cm £850



Untitled (no. 21)
Airbrush, fine liner, colour
pencil, graphite and acetone
transfer on paper
71.5 x 51.5 cm £750



Untitled (no. 23)
Airbrush, fine liner, colour
pencil, graphite and acetone
transfer on paper
77.5 x 59.7 cm £850



Chalet (no. 3)
Watercolour, colour pencil
and graphite on paper
40.6 x 30.5 cm £400



Chalet (no. 4)
Watercolour, colour pencil
and graphite on paper
40.6 x 30.5 cm £400



Untitled (no. 22)
Graphite on paper
40.6 cm x 30.5 cm £400



Church (no. 1)
Graphite on paper
40.6 x 30.5 cm £450



Stag
Graphite on paper
20.5 x 25.5 cm £350



Stags and Hinds
Graphite on paper
20.5 x 25.5 cm £350

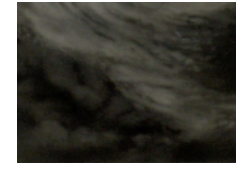


Untitled (no. 17)
Graphite on paper
48.5 x 38.5 cm £550

HELEN JONES



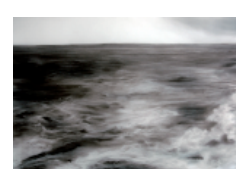
Sunlight Through Clouds
Compressed charcoal on
tracing paper
100 x 74 cm £550



Submerged II
Pigment on tracing paper
100 x 74 cm £550



Clouds
Black pigment on fabriano
124 x 94 cm £700

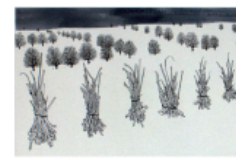


Forecast
Black pigment on tracing paper
94 x 75 cm £700



Forewarned
Black pigment on tracing paper
94 x 75 cm £700

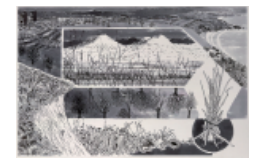
MAX NAYLOR



Triffids
Ink drawing on paper
62 x 48 cm £560



Headland
Ink drawing on paper
66 x 48 cm £560



Traumlandschaft
Inks and correction fluid on
paper
66 x 48 cm £620



Hinterland
Inks and correction fluid on
paper
65 x 40 cm £590



Valley
Inks and correction fluid on
paper
66 x 48 cm £620



Eastern Towers
Inks and correction fluid on
paper
65 x 40 cm £590